

3 Bedroom + Study

TYPE C6S

95 sqm / 1023 sqft

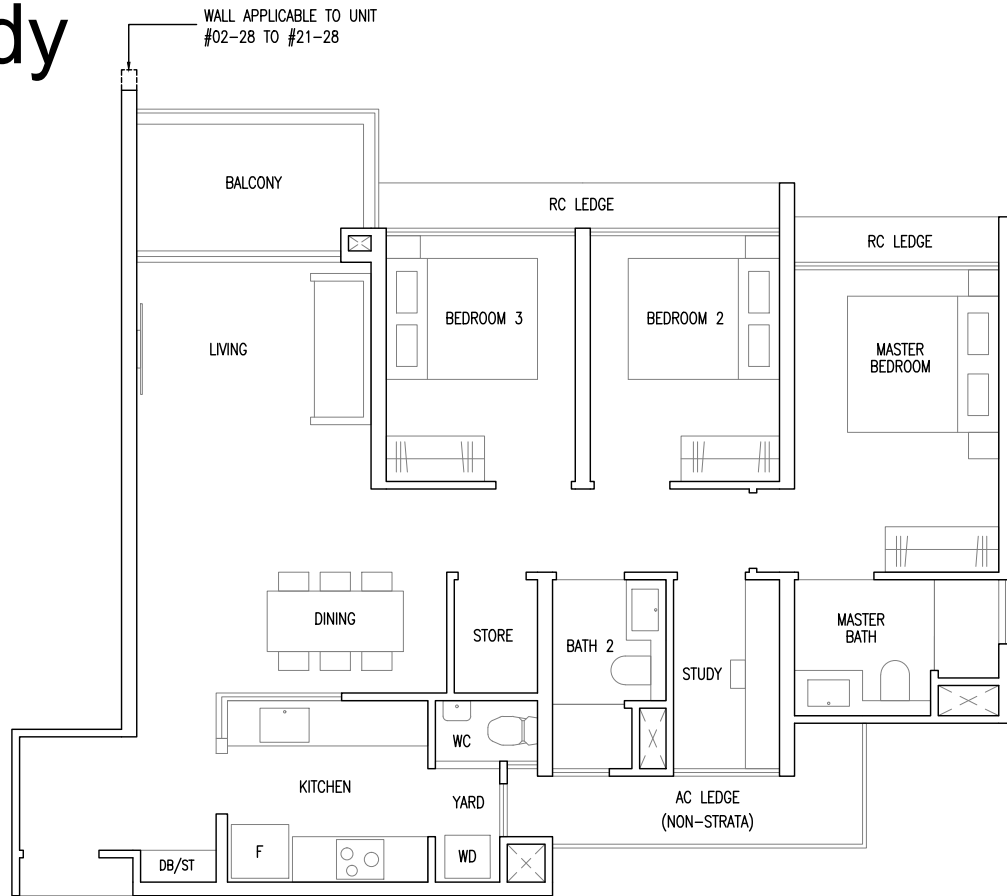
Inclusive of 6 sqm Balcony

Blk 55 #02-20 to #21-20

Blk 57 #02-28 to #21-28

MIRROR UNIT

Blk 63 #03-37 to #21-37

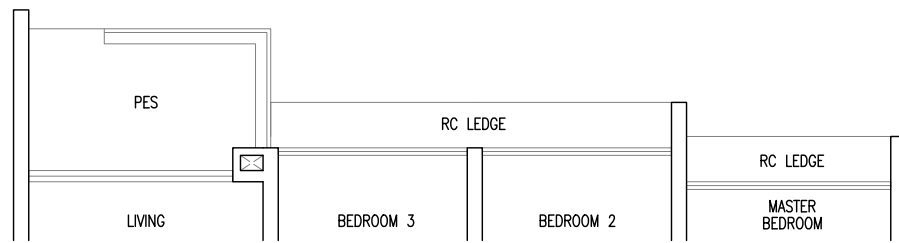


TYPE C6S(p)

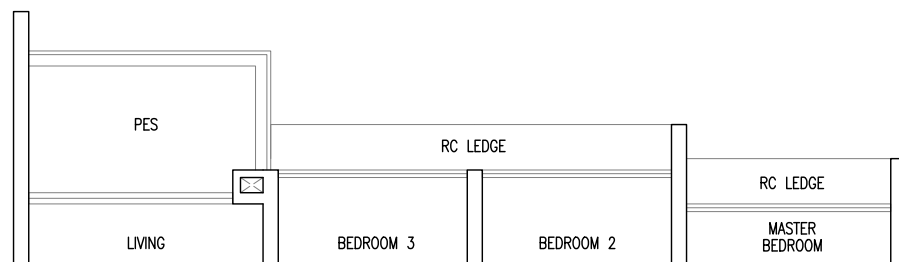
95 sqm / 1023 sqft

Inclusive of 6 sqm PES

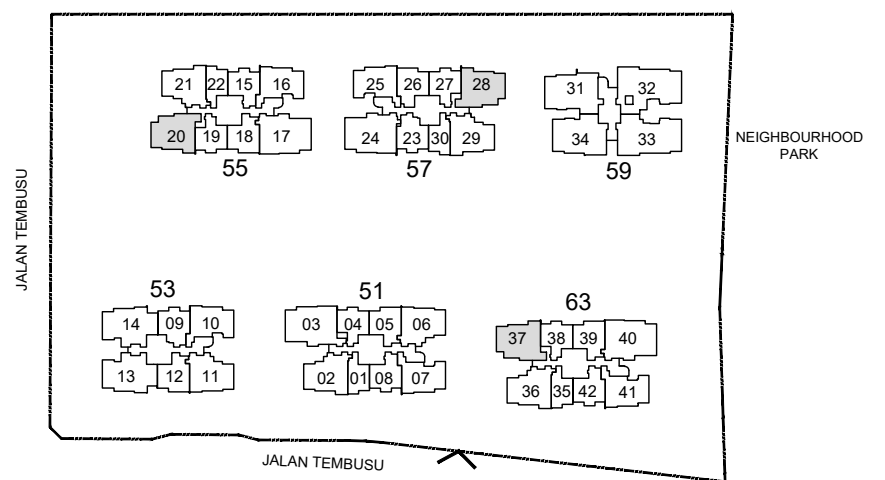
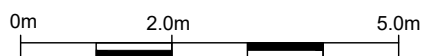
Blk 55 #01-20



Blk 57 #01-28



- F : Fridge
- WD : Washer Cum Dryer
- DB/ST : Distribution Board / Storage
- RC Ledge : Reinforced Concrete Ledge (Non-Strata)
- AC Ledge : Air-Conditioner Ledge (Non-Strata)



KEY PLAN
(NOT TO SCALE)

Area includes balcony and Private Enclosed Space (PES) where applicable. All RC Ledges and AC Ledges are excluded from strata area and are non-load bearing. Some units are mirror images of the floor plans shown in the brochure. Orientations and facings will differ depending on the unit you are purchasing, please refer to the key plan. The above plans and illustrations are subject to changes as may be required or approved by the relevant authorities and do not form part of any offer or contract. Areas are estimates only and are subject to final survey. The balcony & PES shall not be enclosed unless with the approved balcony screen. For an illustration of the approved balcony screen, please refer to Annex A of this brochure.

4 Bedroom + Study

TYPE D1S

107 sqm / 1152 sqft

Inclusive of 6 sqm Balcony

Blk 53 #02-13 to #19-13

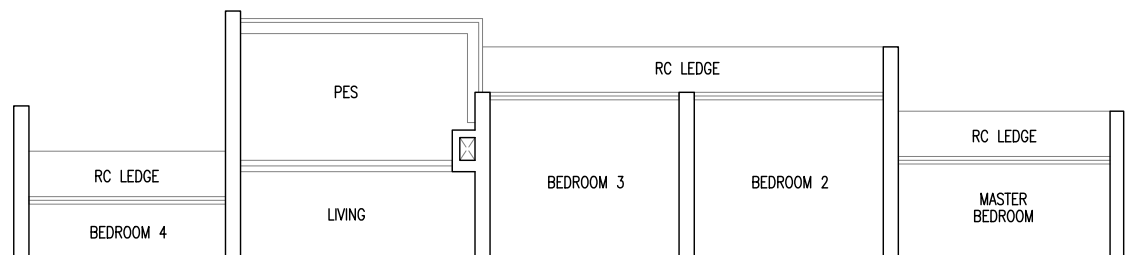


TYPE D1S(p)

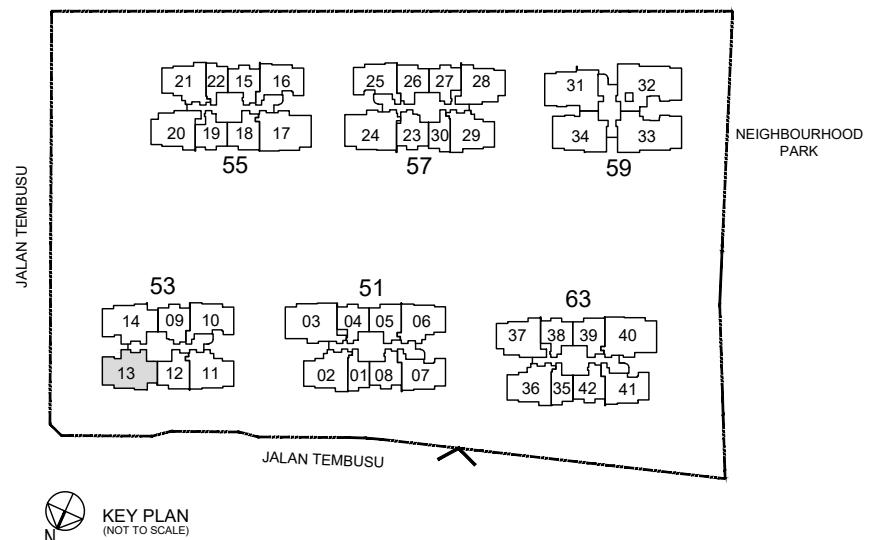
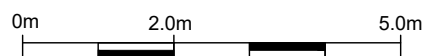
107 sqm / 1152 sqft

Inclusive of 6 sqm PES

Blk 53 #01-13



- F : Fridge
- WD : Washer Cum Dryer
- DB : Distribution Board
- RC Ledge : Reinforced Concrete Ledge (Non-Strata)
- AC Ledge : Air-Conditioner Ledge (Non-Strata)



Area includes balcony and Private Enclosed Space (PES) where applicable. All RC Ledges and AC Ledges are excluded from strata area and are non-load bearing. Some units are mirror images of the floor plans shown in the brochure. Orientations and facings will differ depending on the unit you are purchasing, please refer to the key plan. The above plans and illustrations are subject to changes as may be required or approved by the relevant authorities and do not form part of any offer or contract. Areas are estimates only and are subject to final survey. The balcony & PES shall not be enclosed unless with the approved balcony screen. For an illustration of the approved balcony screen, please refer to Annex A of this brochure.

4 Bedroom + Study

TYPE D2S

107 sqm / 1152 sqft

Inclusive of 6 sqm Balcony

Blk 53 #02-14 to #19-14

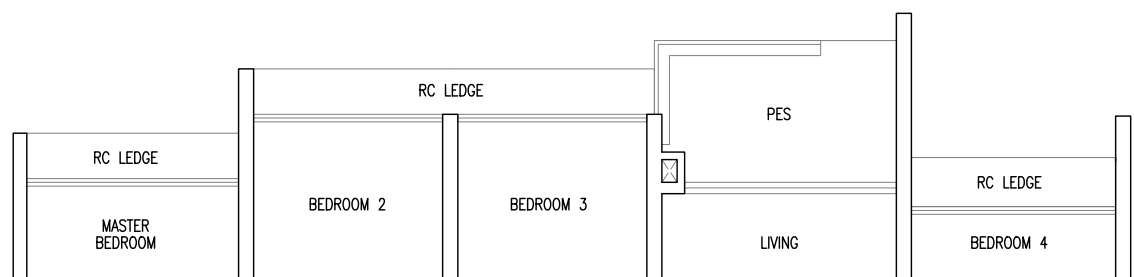


TYPE D2S(p)

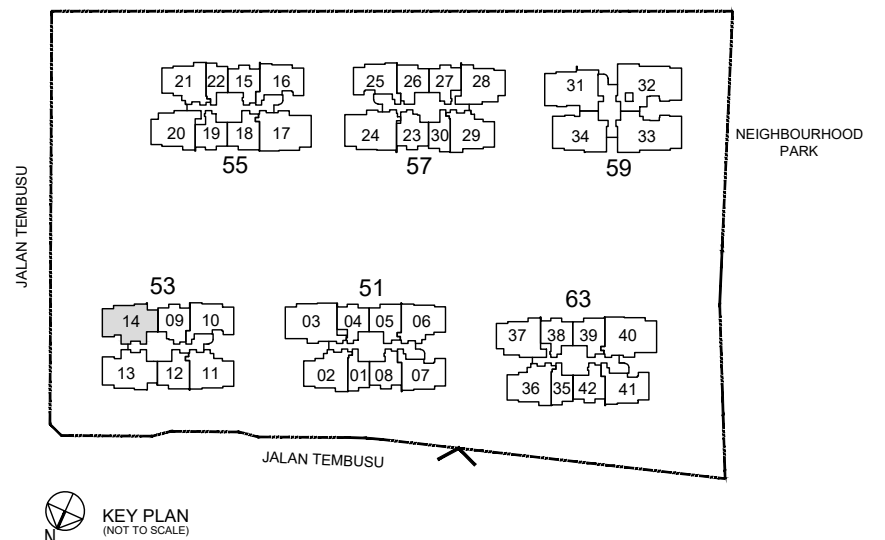
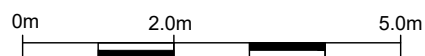
107 sqm / 1152 sqft

Inclusive of 6 sqm PES

Blk 53 #01-14



- F : Fridge
- WD : Washer Cum Dryer
- DB : Distribution Board
- RC Ledge : Reinforced Concrete Ledge (Non-Strata)
- AC Ledge : Air-Conditioner Ledge (Non-Strata)



Area includes balcony and Private Enclosed Space (PES) where applicable. All RC Ledges and AC Ledges are excluded from strata area and are non-load bearing. Some units are mirror images of the floor plans shown in the brochure. Orientations and facings will differ depending on the unit you are purchasing, please refer to the key plan. The above plans and illustrations are subject to changes as may be required or approved by the relevant authorities and do not form part of any offer or contract. Areas are estimates only and are subject to final survey. The balcony & PES shall not be enclosed unless with the approved balcony screen. For an illustration of the approved balcony screen, please refer to Annex A of this brochure.

4 Bedroom Premium

TYPE D3P

117 sqm / 1259 sqft

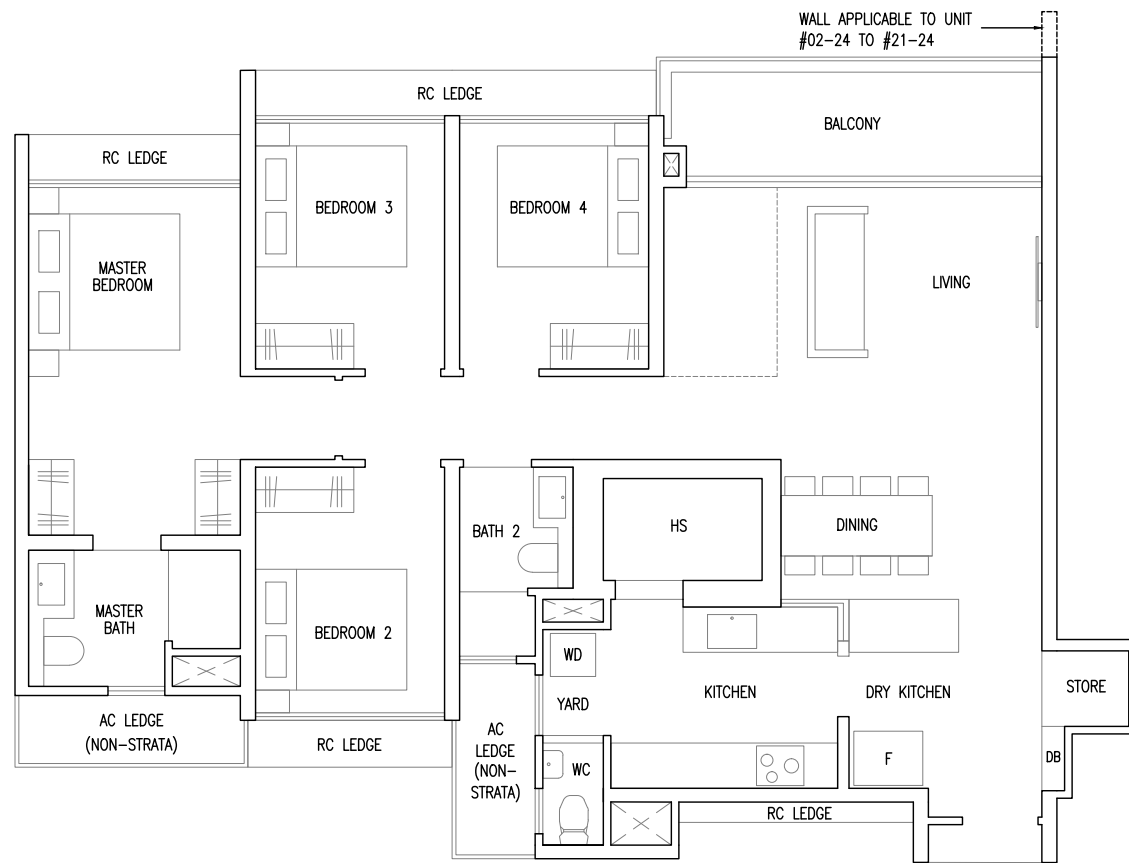
Inclusive of 8 sqm Balcony

Blk 55 #02-17 to #21-17

MIRROR UNIT

Blk 57 #02-24 to #21-24

Blk 63 #02-40 to #21-40



TYPE D3P(p)

117 sqm / 1259 sqft

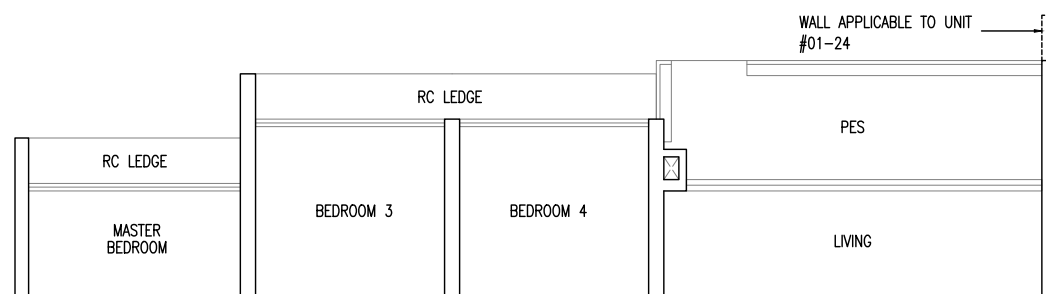
Inclusive of 8 sqm PES

Blk 55 #01-17

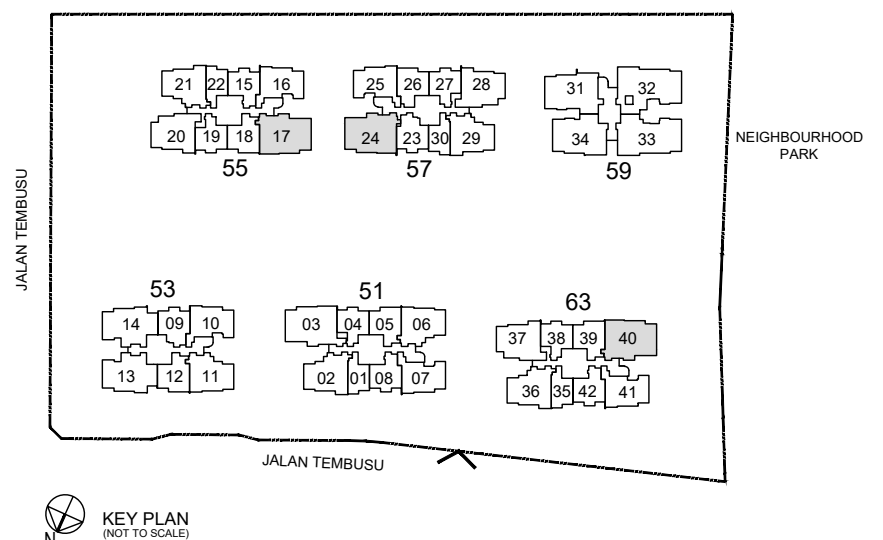
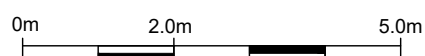
MIRROR UNIT

Blk 57 #01-24

Blk 63 #01-40



- F : Fridge
- WD : Washer Cum Dryer
- HS : Household Shelter
- DB : Distribution Board
- RC Ledge : Reinforced Concrete Ledge (Non-Strata)
- AC Ledge : Air-Conditioner Ledge (Non-Strata)



KEY PLAN
(NOT TO SCALE)

Area includes balcony and Private Enclosed Space (PES) where applicable. All RC Ledges and AC Ledges are excluded from strata area and are non-load bearing. Some units are mirror images of the floor plans shown in the brochure. Orientations and facings will differ depending on the unit you are purchasing, please refer to the key plan. The above plans and illustrations are subject to changes as may be required or approved by the relevant authorities and do not form part of any offer or contract. Areas are estimates only and are subject to final survey. The balcony & PES shall not be enclosed unless with the approved balcony screen. For an illustration of the approved balcony screen, please refer to Annex A of this brochure.

4 Bedroom Premium

TYPE D4P

118 sqm / 1270 sqft

Inclusive of 8 sqm Balcony

Blk 51 #02-03 to #21-03

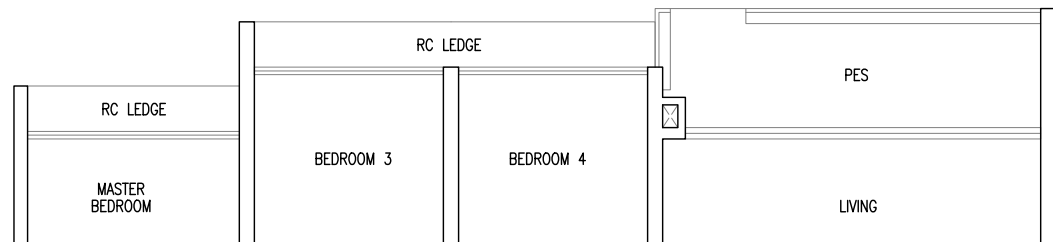


TYPE D4P(p)

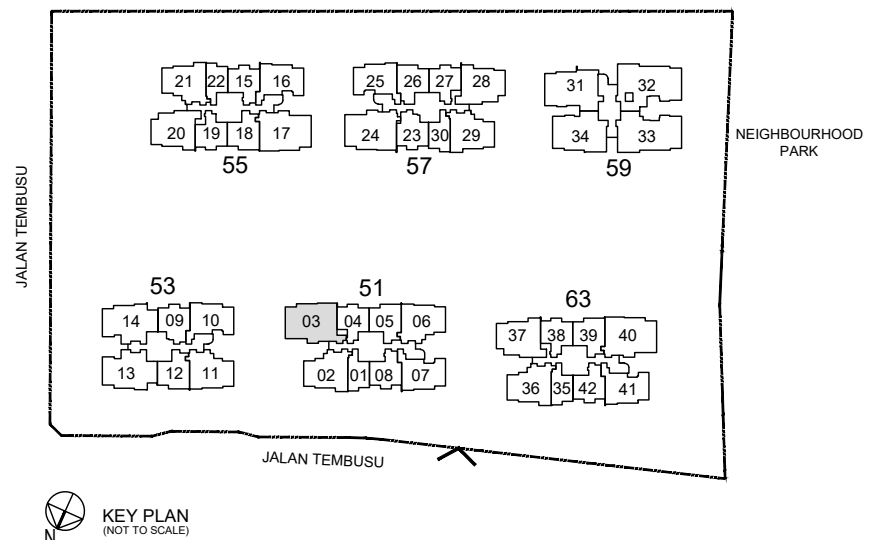
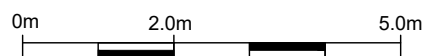
118 sqm / 1270 sqft

Inclusive of 8 sqm PES

Blk 51 #01-03



- F : Fridge
- WD : Washer Cum Dryer
- HS : Household Shelter
- DB : Distribution Board
- RC Ledge : Reinforced Concrete Ledge (Non-Strata)
- AC Ledge : Air-Conditioner Ledge (Non-Strata)



Area includes balcony and Private Enclosed Space (PES) where applicable. All RC Ledges and AC Ledges are excluded from strata area and are non-load bearing. Some units are mirror images of the floor plans shown in the brochure. Orientations and facings will differ depending on the unit you are purchasing, please refer to the key plan. The above plans and illustrations are subject to changes as may be required or approved by the relevant authorities and do not form part of any offer or contract. Areas are estimates only and are subject to final survey. The balcony & PES shall not be enclosed unless with the approved balcony screen. For an illustration of the approved balcony screen, please refer to Annex A of this brochure.

4 Bedroom Luxe + Study

TYPE D5LS

121 sqm / 1302 sqft

Inclusive of 10 sqm Balcony

Blk 59 #02-34 to #17-34

TYPE D5LS(H)

121 sqm / 1302 sqft

Inclusive of 10 sqm Balcony

(High ceiling of 5 metres over living / dining)

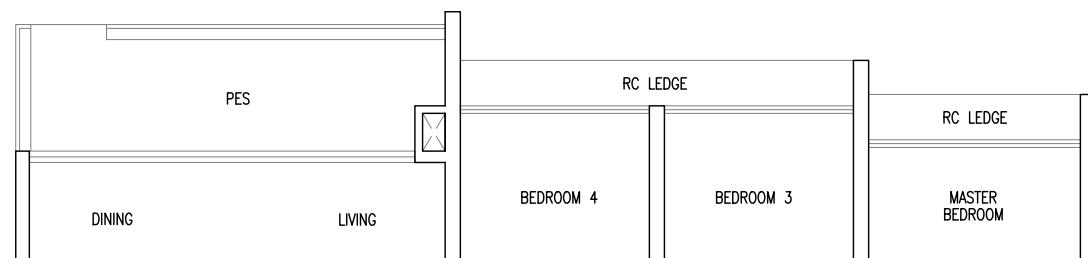
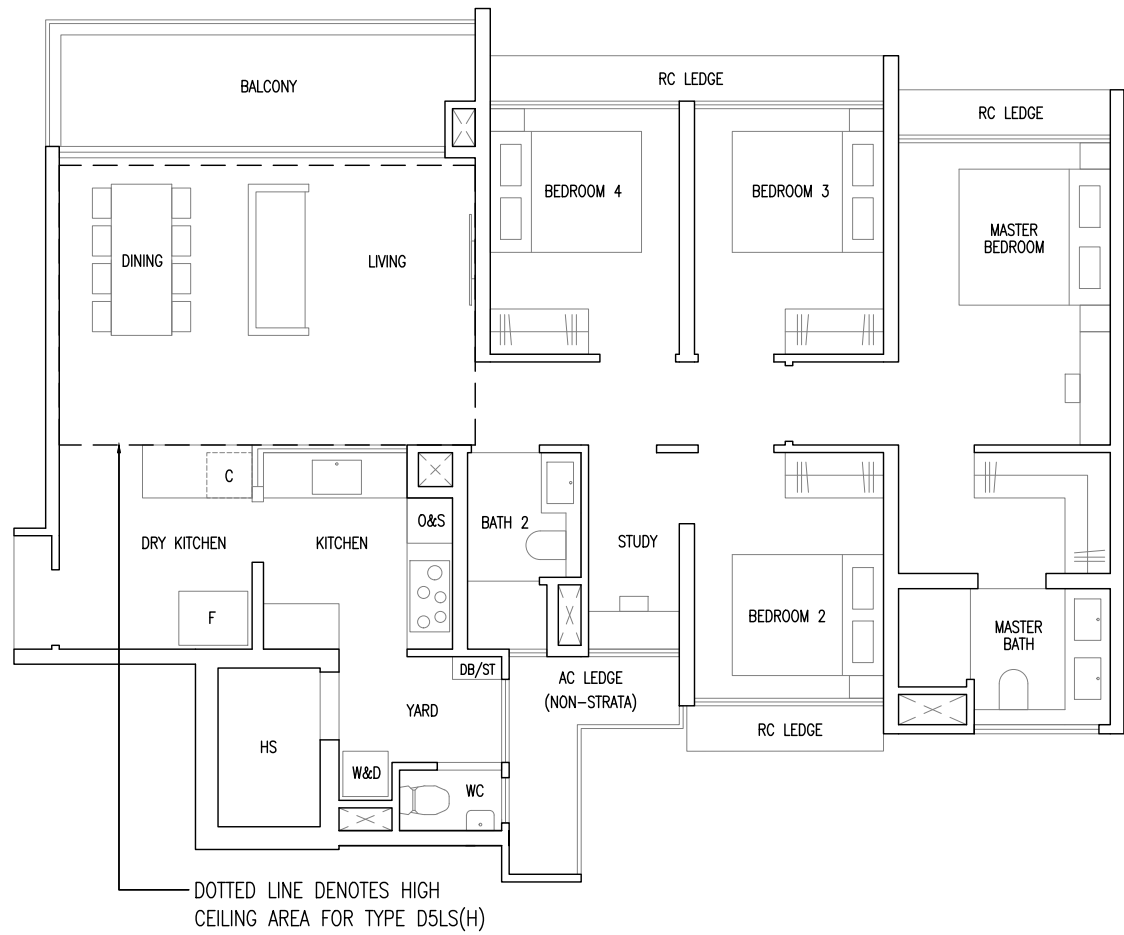
Blk 59 #18-34

TYPE D5LS(p)

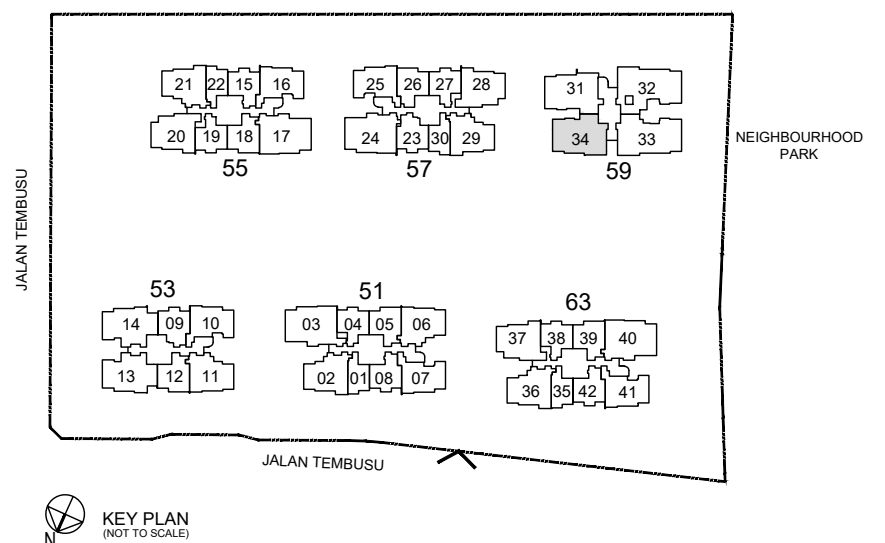
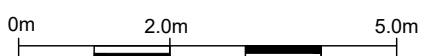
121 sqm / 1302 sqft

Inclusive of 10 sqm PES

Blk 59 #01-34



- F : Fridge
- W&D : Washer & Dryer
- O&S : Oven & Steamer
- C : Wine Chiller
- HS : Household Shelter
- DB/ST : Distribution Board / Storage
- RC Ledge : Reinforced Concrete Ledge (Non-Strata)
- AC Ledge : Air-Conditioner Ledge (Non-Strata)



Area includes balcony and Private Enclosed Space (PES) where applicable. All RC Ledges and AC Ledges are excluded from strata area and are non-load bearing. Some units are mirror images of the floor plans shown in the brochure. Orientations and facings will differ depending on the unit you are purchasing, please refer to the key plan. The above plans and illustrations are subject to changes as may be required or approved by the relevant authorities and do not form part of any offer or contract. Areas are estimates only and are subject to final survey. The balcony & PES shall not be enclosed unless with the approved balcony screen. For an illustration of the approved balcony screen, please refer to Annex A of this brochure.

4 Bedroom Luxe + Study

TYPE D6LS

122 sqm / 1313 sqft

Inclusive of 10 sqm Balcony

Blk 59 #03-31 to #17-31

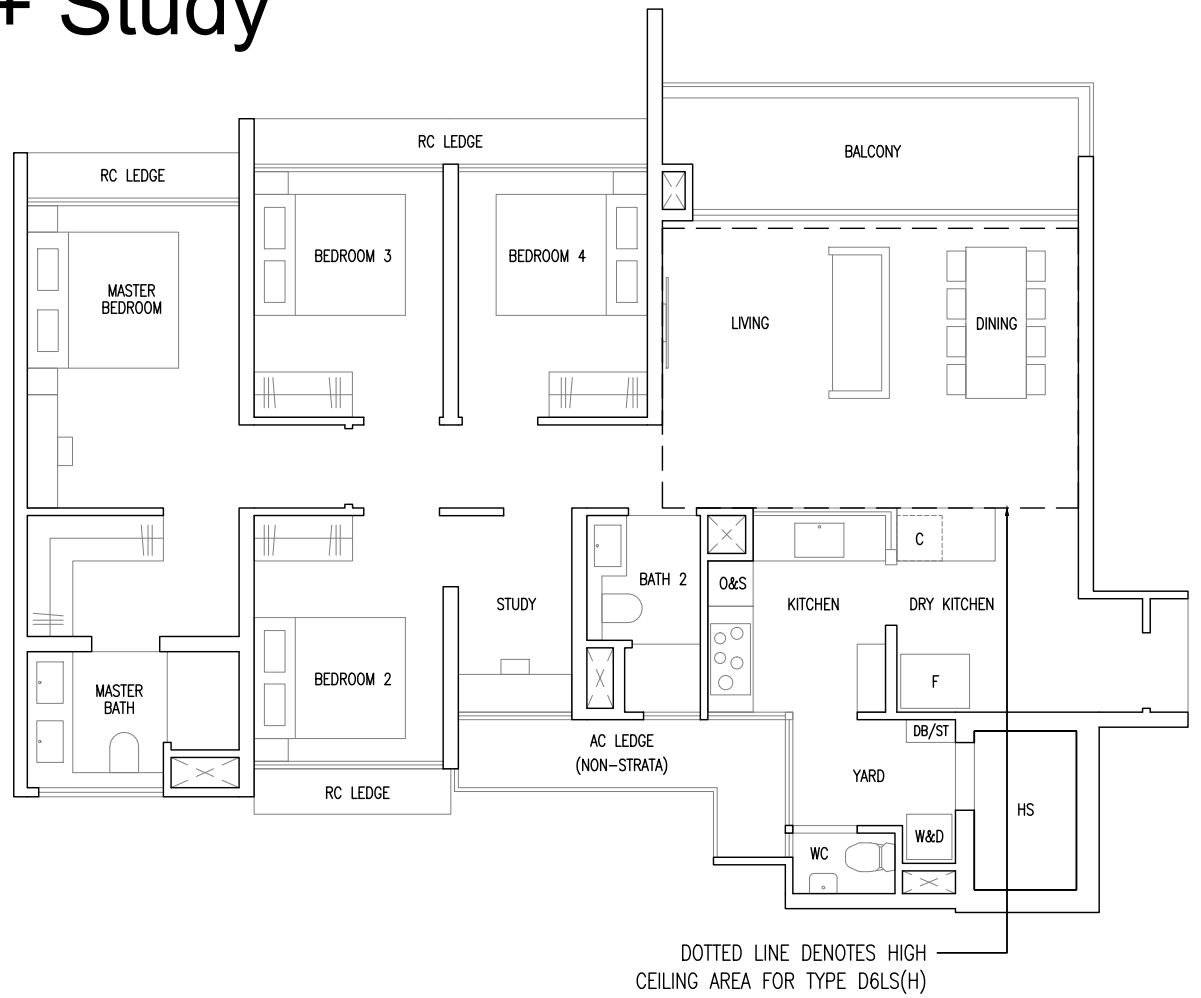
TYPE D6LS(H)

122 sqm / 1313 sqft

Inclusive of 10 sqm Balcony

(High ceiling of 5 metres over living / dining)

Blk 59 #18-31

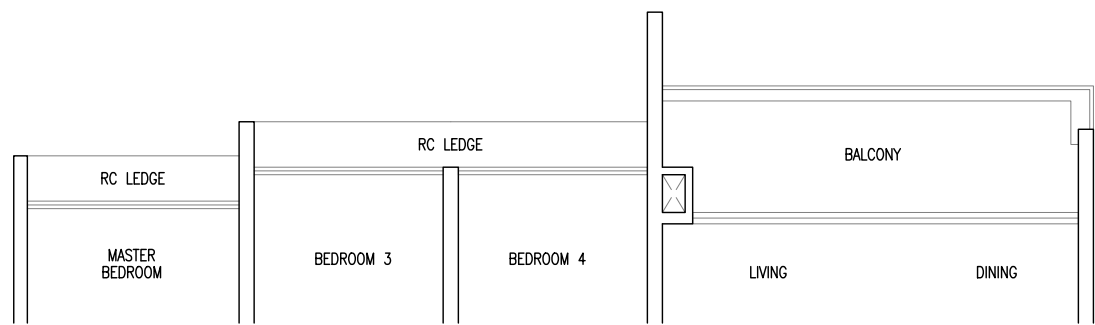


TYPE D6LS

122 sqm / 1313 sqft

Inclusive of 10 sqm Balcony

Blk 59 #02-31

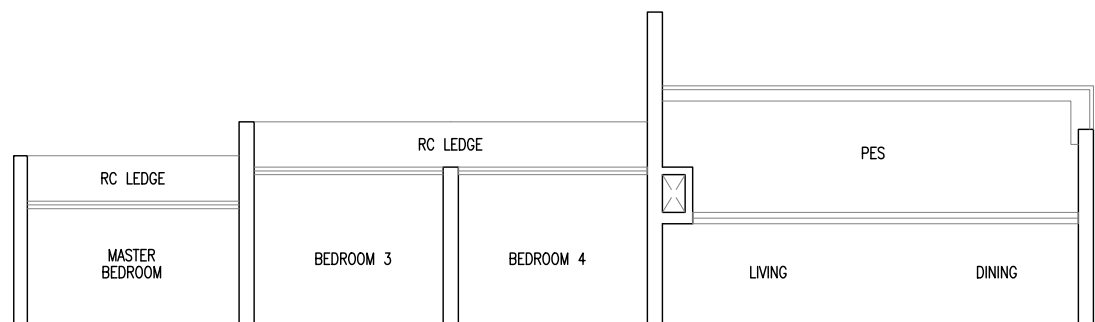


TYPE D6LS(p)

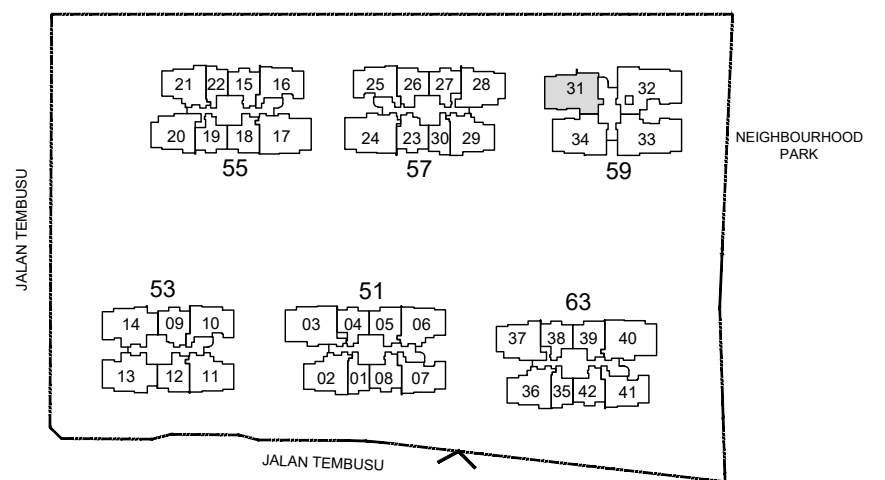
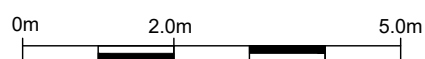
122 sqm / 1313 sqft

Inclusive of 10 sqm PES

Blk 59 #01-31



- F : Fridge
- W&D : Washer & Dryer
- O&S : Oven & Steamer
- C : Wine Chiller
- HS : Household Shelter
- DB/ST : Distribution Board / Storage
- RC Ledge : Reinforced Concrete Ledge (Non-Strata)
- AC Ledge : Air-Conditioner Ledge (Non-Strata)



KEY PLAN
(NOT TO SCALE)

Area includes balcony and Private Enclosed Space (PES) where applicable. All RC Ledges and AC Ledges are excluded from strata area and are non-load bearing. Some units are mirror images of the floor plans shown in the brochure. Orientations and facings will differ depending on the unit you are purchasing, please refer to the key plan. The above plans and illustrations are subject to changes as may be required or approved by the relevant authorities and do not form part of any offer or contract. Areas are estimates only and are subject to final survey. The balcony & PES shall not be enclosed unless with the approved balcony screen. For an illustration of the approved balcony screen, please refer to Annex A of this brochure.

5 Bedroom Luxe

TYPE E1L

137 sqm / 1475 sqft

Inclusive of 11 sqm Balcony

Blk 59 #02-33 to #17-33

TYPE E1L(H)

137 sqm / 1475 sqft

Inclusive of 11 sqm Balcony

(High ceiling of 5 metres over living / dining)

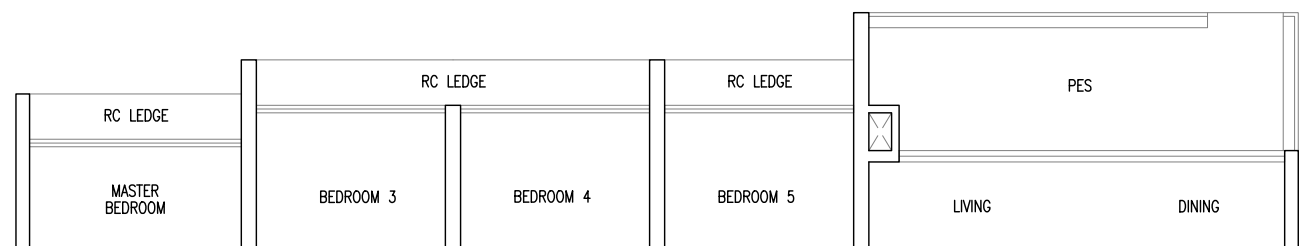
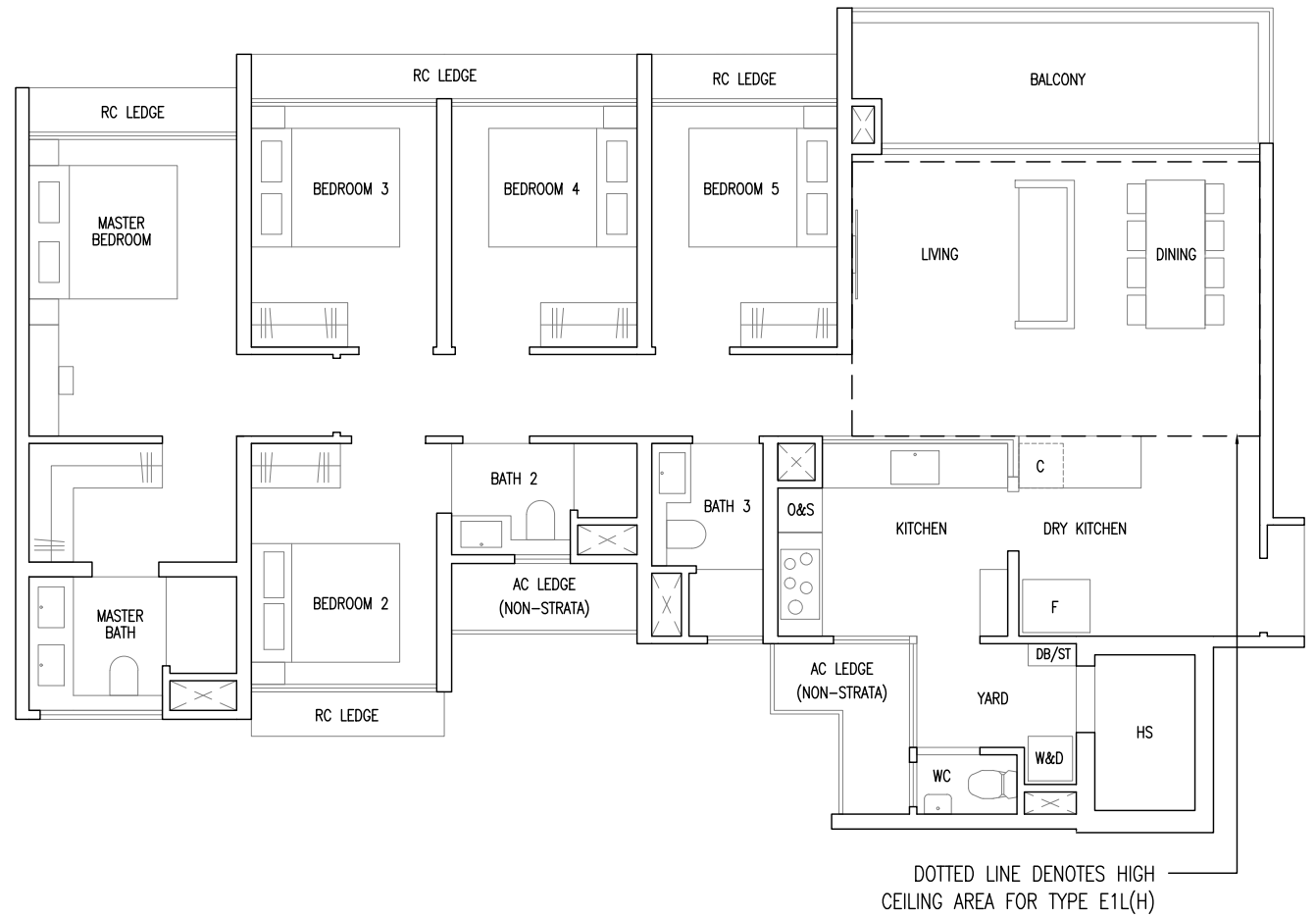
Blk 59 #18-33

TYPE E1L(p)

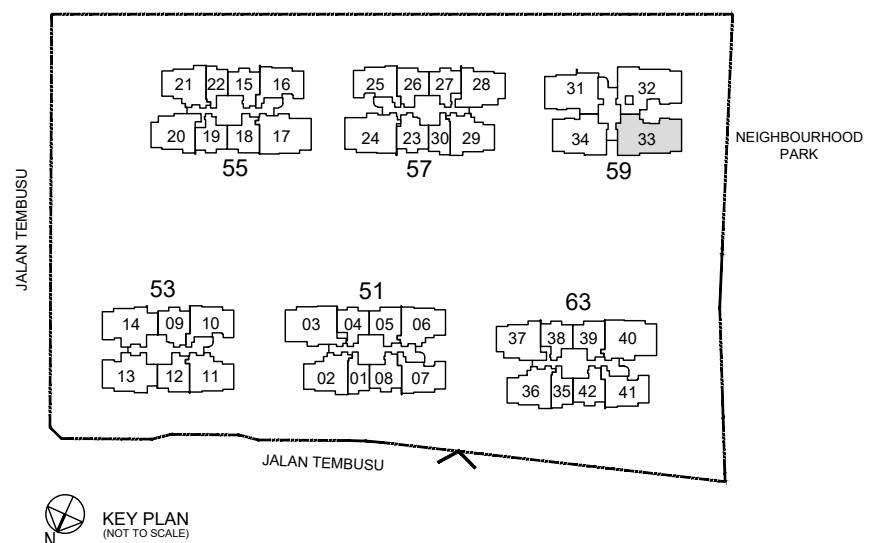
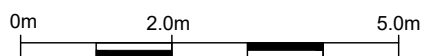
137 sqm / 1475 sqft

Inclusive of 11 sqm PES

Blk 59 #01-33



- F : Fridge
- W&D : Washer & Dryer
- O&S : Oven & Steamer
- C : Wine Chiller
- HS : Household Shelter
- DB/ST : Distribution Board / Storage
- RC Ledge : Reinforced Concrete Ledge (Non-Strata)
- AC Ledge : Air-Conditioner Ledge (Non-Strata)



Area includes balcony and Private Enclosed Space (PES) where applicable. All RC Ledges and AC Ledges are excluded from strata area and are non-load bearing. Some units are mirror images of the floor plans shown in the brochure. Orientations and facings will differ depending on the unit you are purchasing, please refer to the key plan. The above plans and illustrations are subject to changes as may be required or approved by the relevant authorities and do not form part of any offer or contract. Areas are estimates only and are subject to final survey. The balcony & PES shall not be enclosed unless with the approved balcony screen. For an illustration of the approved balcony screen, please refer to Annex A of this brochure.

5 Bedroom Luxe

TYPE E2L(p)

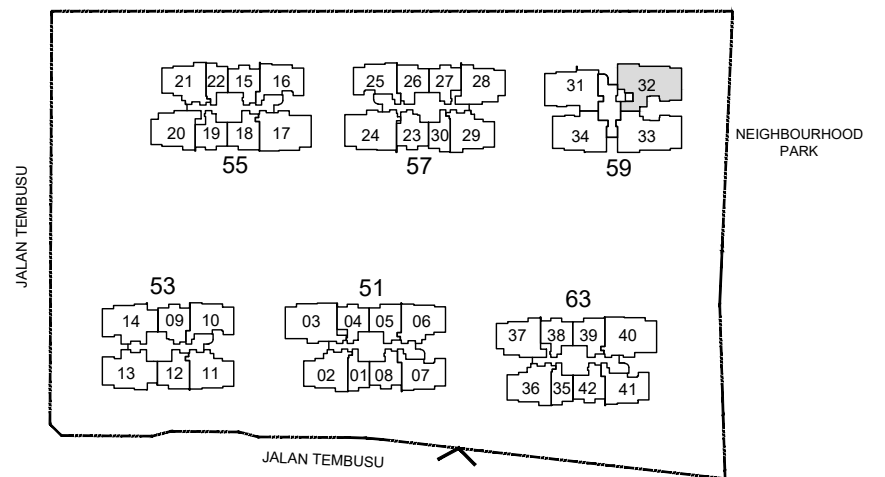
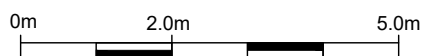
138 sqm / 1485 sqft

Inclusive of 11 sqm PES

Blk 59 #01-32



- F : Fridge
- W&D : Washer & Dryer
- O&S : Oven & Steamer
- C : Wine Chiller
- HS : Household Shelter
- DB/ST : Distribution Board / Storage
- RC Ledge : Reinforced Concrete Ledge (Non-Strata)
- AC Ledge : Air-Conditioner Ledge (Non-Strata)



KEY PLAN
(NOT TO SCALE)

Area includes balcony and Private Enclosed Space (PES) where applicable. All RC Ledges and AC Ledges are excluded from strata area and are non-load bearing. Some units are mirror images of the floor plans shown in the brochure. Orientations and facings will differ depending on the unit you are purchasing, please refer to the key plan. The above plans and illustrations are subject to changes as may be required or approved by the relevant authorities and do not form part of any offer or contract. Areas are estimates only and are subject to final survey. The balcony & PES shall not be enclosed unless with the approved balcony screen. For an illustration of the approved balcony screen, please refer to Annex A of this brochure.

5 Bedroom Luxe

TYPE E3L

145 sqm / 1561 sqft

Inclusive of 11 sqm Balcony

Blk 59 #02-32 to #17-32

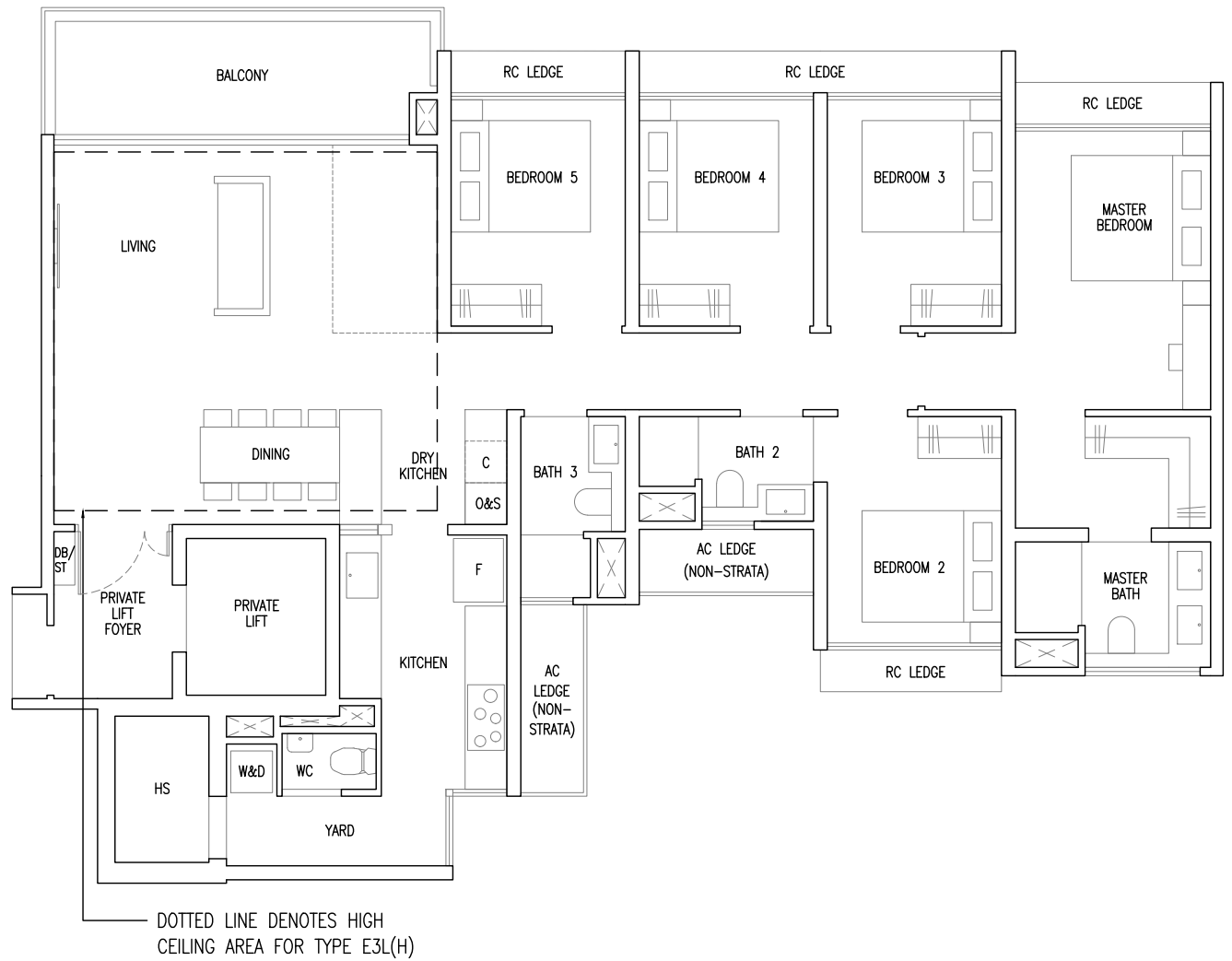
TYPE E3L(H)

145 sqm / 1561 sqft

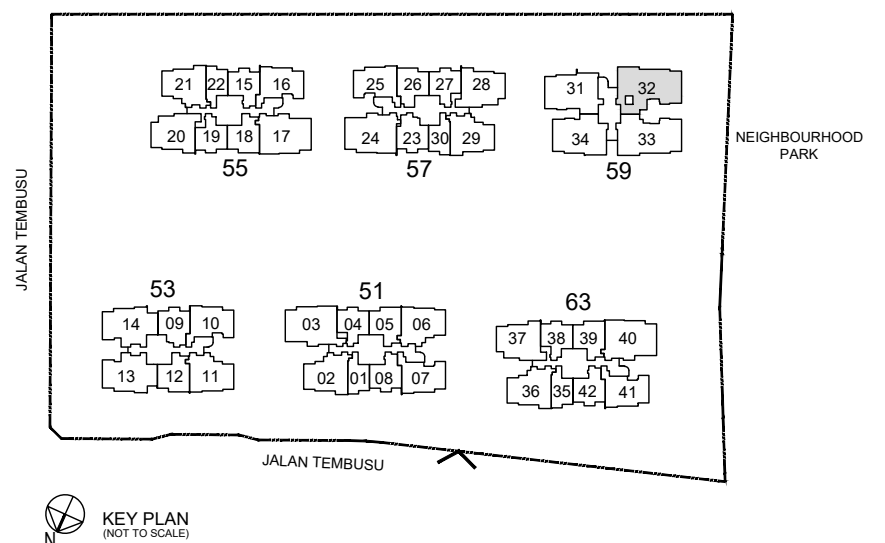
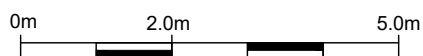
Inclusive of 11 sqm Balcony

(High ceiling of 5 metres over living / dining)

Blk 59 #18-32



- F : Fridge
- W&D : Washer & Dryer
- O&S : Oven & Steamer
- C : Wine Chiller
- HS : Household Shelter
- DB/ST : Distribution Board / Storage
- RC Ledge : Reinforced Concrete Ledge (Non-Strata)
- AC Ledge : Air-Conditioner Ledge (Non-Strata)



Area includes balcony and Private Enclosed Space (PES) where applicable. All RC Ledges and AC Ledges are excluded from strata area and are non-load bearing. Some units are mirror images of the floor plans shown in the brochure. Orientations and facings will differ depending on the unit you are purchasing, please refer to the key plan. The above plans and illustrations are subject to changes as may be required or approved by the relevant authorities and do not form part of any offer or contract. Areas are estimates only and are subject to final survey. The balcony & PES shall not be enclosed unless with the approved balcony screen. For an illustration of the approved balcony screen, please refer to Annex A of this brochure.